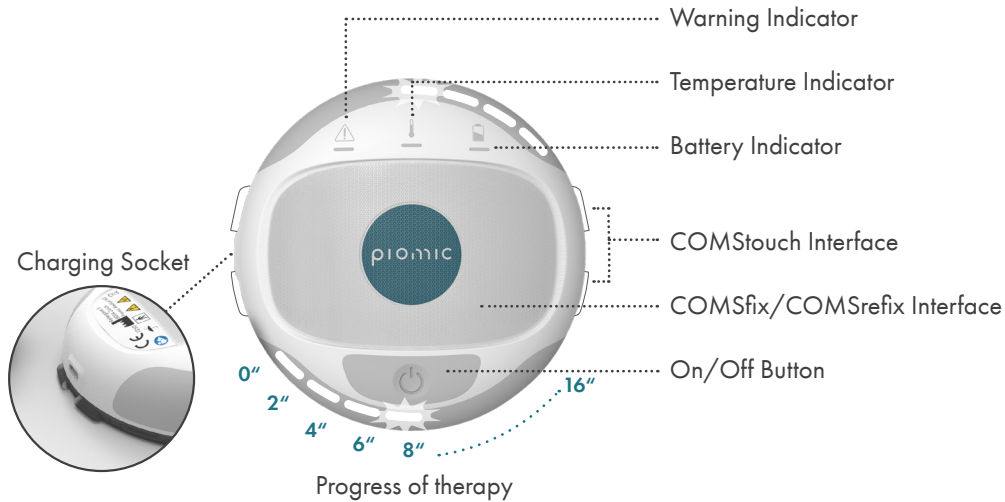




The COMS One Quick Card does not replace the COMS One instructions for use. For information on intended use, indications, contraindications, warnings and precautions, please refer to the instructions for use supplied with the COMS One device or available at [www.piomic.com/our-product](http://www.piomic.com/our-product)

## OVERVIEW COMS ONE DEVICE

A therapy takes **16 minutes**. In order to reach the scientifically proven promotion of wound healing the therapy shall be performed **2-3 times per week** and be **repeated over the course of two months**.



## INDICATION FUNCTIONS



Device ready for therapy (constant)  
Therapy in pause (flashing)



Battery good



Battery low



Battery empty  
(charge)



Device overheated  
(wait)



Device error  
(switch on and off)

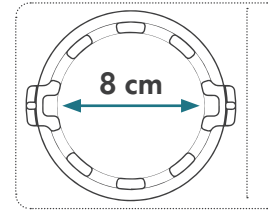


Therapy successfully  
completed

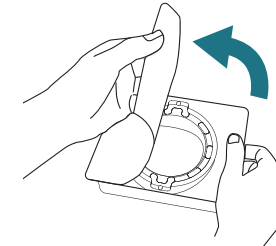


Therapy interrupted due to  
an error

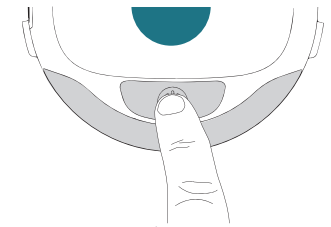
## PERFORMING A THERAPY



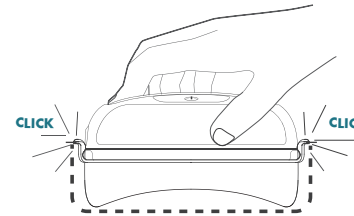
1. Check whether COMS touch is suitable for the existing wound size (8cm).



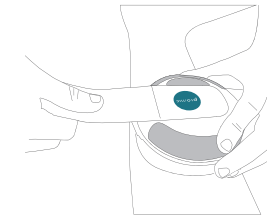
2. Open the sterile package carefully without touching the COMStouch.



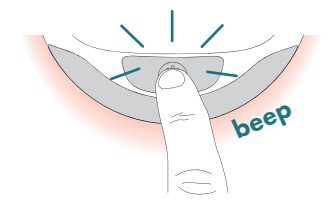
3. Keep -button pressed for 3 seconds. The device is ready for use:



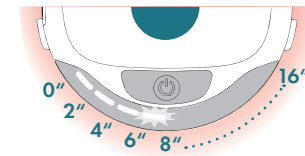
4. Connect device with COMStouch.



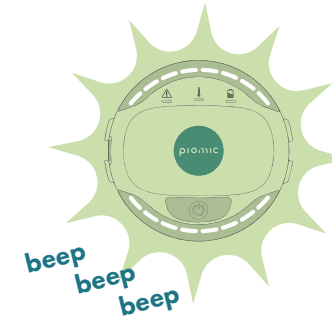
5. Attach the device to the patient (COMSfix or COMSrefix). The Logo is on top.



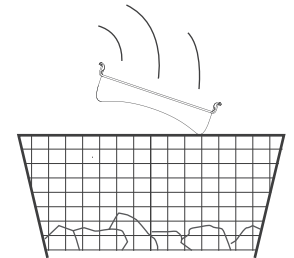
6. Press - button once to start therapy. Press - button again to pause the therapy.



7. Therapy progress is indicated by flashing bars. Each bar represents 2 minutes.



8. Therapy has been successfully completed. To switch off, press and hold -button for 3 seconds.



9. Remove strap and device from the patient and dispose of consumables (COMStouch, COMSfix).